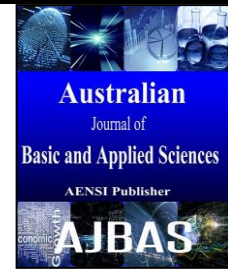




ISSN:1991-8178

## Australian Journal of Basic and Applied Sciences

Journal home page: www.ajbasweb.com



### Detection of Masses and Classification in Ultrasound Images

<sup>1</sup>K.Jeyanthi and <sup>2</sup>Dr.S. Mangai

<sup>1</sup>Assistant Professor /ECE Department, KPR Institute of Engineering and Technology, Coimbatore 641407.

<sup>2</sup>Professor/ ECE Department Velalar College of Engineering and Technology, Thindal Erode 638012.

#### ARTICLE INFO

##### Article history:

*R* Received 3 June 2015

Received in revised form 17 June 2015

Accepted 1 August 2015

Available online 15 October 2015

##### Keywords:

computer aided diagnosis (CAD), breast ultrasound (BUS), feature extraction and selection, classifiers.

#### ABSTRACT

Breast cancer is the second leading cause of death for women all over the world. Since the cause of the disease remains unknown, early detection and diagnosis is the key for breast cancer control, and it can increase the success of treatment and save lives. Ultrasound imaging is one of the most frequently used diagnosis tools to detect and classify abnormalities of the breast. In order to eliminate the operator dependency and improve the diagnostic accuracy, computer-aided diagnosis (CAD) system is a valuable and beneficial means for breast cancer detection and classification. Generally, a CAD system consists of four stages: preprocessing, image segmentation, feature extraction and selection, and classification. Masses and microcalcification are both important signs of breast cancer. In this paper, masses are identified and classified into benign and malignant.

© 2015 AENSI Publisher All rights reserved.

**To Cite This Article:** K.Jeyanthi and Dr.S. Mangai, Detection of Masses and Classification in Ultrasound Images. *Aust. J. Basic & Appl. Sci.*, 9(27): 631-634, 2015

#### INTRODUCTION

Breast cancer is the second leading cause of death for women all over the world and more than 8% women will suffer this disease during their lifetime. In 2008, there were reported approximately 182,460 newly diagnosed cases and 40,480 deaths in the United States. Since the causes of breast cancer still remain unknown, early detection is the key to reduce the death rate. The earlier the cancers are detected, the better treatment can be provided. A good detection approach should produce both low false positive (FP) rate and false negative (FN) rate. Previously, the most effective modality for detecting and diagnosing breast cancer is mammography, but limitations are there in mammography for breast cancer detection. Mammography can hardly detect breast cancer in adolescent women with dense breasts. In addition, the ionizing radiation of mammography can increase the health risk for the patients and radiologists.

Currently, an important alternative to mammography is ultrasound (US) imaging, and it shows an increasing interest in the use of ultrasound images for breast cancer detection. Studies have demonstrated that using US images can discriminate benign and malignant masses with a high accuracy. Use of ultrasound can increase overall cancer detection by 17% and reduce the number of unnecessary biopsies by 40%. Breast ultrasound

(BUS) imaging is superior to the mammography in the facts: (Shahzad, 2013) ultrasound is radiation free, more convenient and safer than mammography for patients and radiologists. (Afsaneh Jalalian, 2013) Ultrasound is more sensitive in detecting abnormalities. (Li, 2013) There is a high rate of false positives in mammography which causes a lot of unnecessary biopsies. In contrast, the accuracy rate of BUS imaging in the diagnosis of simple cysts can reach 96–100%.

##### A. Image preprocessing:

The major limitations of BUS imaging are the low contrast and interference with speckle. The task of image preprocessing is to enhance the image and to reduce speckle without destroying the important features of BUS images for diagnosis.

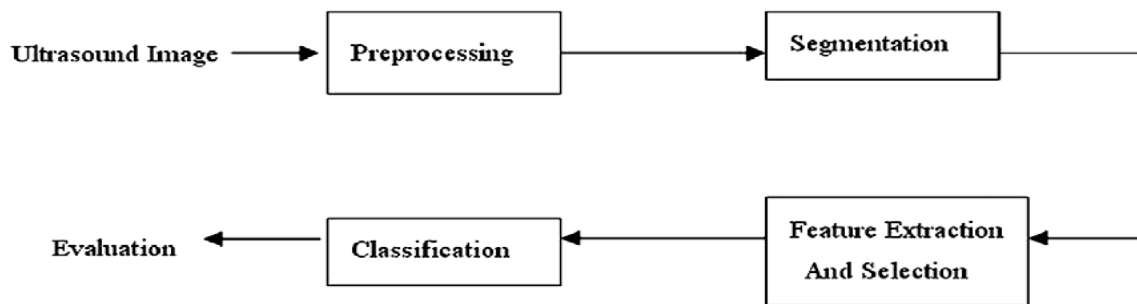
##### B. Image segmentation:

Image segmentation divides the image into non-overlapping regions, and it will separate the objects from the background.

##### C. Feature extraction and selection:

This step is to find a feature set of breast cancer lesions that can accurately distinguish lesion/non lesion benign or malignant and plays an important role in feature extraction for diagnosis. The feature space could be very large and complex, so extracting

and selecting the most effective features is very important.



**Fig. 1:** CAD system for breast cancer.

#### **D. Classification:**

Based on the selected features, the suspicious regions will be classified as benign or malignant by the classification methods. The advantage of CAD system is its simple structure and fast processing speed, and disadvantage is that the features extracted directly from ROIs may not provide robust and accurate performance.

#### **II. Preprocessing:**

The preprocessing of BUS images consists of speckle reduction and image enhancement. Speckle is a form of multiplicative noise generated by a number of scatters with random phase within the resolution cell of ultrasound beam has demonstrated that the  $k$ -distribution is a good model for the amplitude distribution of the received signal. A more generalized statistical model, the homodyned  $k$ -distribution, has been analyzed. It combined the features of the  $k$ -distribution and Rice distribution to better account for the statistics of the signal. To detect speckles, the parameters for the speckles should be estimated first. The speckle parameters of the  $k$ -distribution model can be estimated based on the moments. An iterative method using the statistics of ultrasound signal is proposed to find the parameters of the homodyned  $k$ -distribution model. Speckle makes the visual observation and interpretation difficult. Therefore, removing speckle without destroying important features for diagnosis is critical. Some speckle reduction techniques only work well on additive noise, and logarithmic compression is often employed to convert multiplicative noise into additive noise. Image enhancement is used to improve the quality of low contrast images.

#### **A. Wavelet domain techniques:**

The discrete wavelet transform (DWT) translates the image into an approximation sub-band consisting of the scale coefficients and a set of detail sub-bands at different orientations and resolution scales composed of the wavelet coefficients. DWT provides an appropriate basis for separating the noise from an image. As the wavelet transform is good at energy

compaction, the small coefficients more likely represent noise, and large coefficients represent important image features. These properties make DWT attractive for denoising. The general procedure is: (Shahzad, 2013) calculate the discrete wavelet transform; (Afsaneh Jalalian, 2013) remove noise by changing the wavelet coefficients; and (Li, 2013) apply the inverse wavelet transform (IDWT) to construct the despeckled image. The techniques are grouped as: (Shahzad, 2013) wavelet shrinkage; (Afsaneh Jalalian, 2013) wavelet despeckling under Bayesian framework and (Li, 2013) wavelet filtering and diffusion. Wavelet shrinkage method is chosen for wavelet domain technique.

#### **B. Wavelet shrinkage:**

The wavelet shrinkage is based on thresholding the wavelet coefficients. It suppresses the coefficients representing noise while retains the coefficients that more likely representing image features. It is usually performed using one of the two dominant thresholding schemes Adaptive thresholding which makes threshold values adaptive to the spatially changing statistics of the images has attracted more attention. Adaptive thresholding improves the performance by incorporating additional local information such as the identification of edge into the despeckling algorithm.

#### **III. Segmentation:**

Segmentation is a partition of the image into non-overlapping regions. The goal for the segmentation is to locate the suspicious areas to assist radiologists in diagnoses.

#### **A. Active contour model:**

The active contour model, more widely known as snake, is a framework for delineating an object outline from a possibly noisy 2D image, and has been massively used as an edge based segmentation method. This approach attempts to minimize the energy associated with the current contour as the sum of the internal and external energies. During the deformation process, the force is calculated from the internal energy and external energy. The external

energy derived from image feature energy is used to extract the contour of the desired object boundary. The internal energy derived from the contour model is used to control the shape and regularity of the contour. The snake model has been extensively used for US images. A formulation of the empirical rules used by radiologists in detecting ultrasonic breast lesions was employed to automatically determine a seed point in the image. Followed by region growing to obtain an initial segmentation of the lesion, image pixels were classified according to the intensity and texture. Finally, the image as segmented according to the minimum energy.

#### IV. Feature Extraction and Selection:

Feature extraction and selection are important steps in breast cancer detection and classification. An optimum feature set should have effective and discriminating features, while mostly reduce the redundancy of feature space to avoid curse of dimensionality. The features of breast US images can be divided into four categories: texture, morphologic, model-based and descriptor features. Extraction and selection of effective features is a necessary step. Most of the texture features are calculated from the entire image or ROIs using the gray level values. Auto-covariance coefficient is a basic and traditional texture feature which can reflect the inner pixel correlation within an image. The contrast, energy, entropy and inverse difference normalized values are calculated from the formulae.

#### V. Classification:

After the features have been extracted and selected, they are input into a classifier to categorize



Fig. 2: Benign mass

the images into lesion/non-lesion or benign/malignant classes. Lesion detection is necessary before lesion classification. Artificial neural network is used to classify the images into benign or malignant because artificial neural network has no rule, widely applicable and robustness.

#### A. Artificial neural network:

Artificial neural networks are the collection of mathematical models that imitate the properties of biological nervous system and the functions of adaptive biological learning. ANN is composed of an input layer, an output layer and one or more hidden layers. Back-propagation neural network is used in ANN to classify the images.

#### B. Back-propagation neural network:

Back-propagation neural network is a feed-forward ANN with supervised learning process. It is widely applicable and no rule is needed. Frequently used back-propagation neural networks have one or two hidden layers and 2–10 neurons in each layer. The Back-Propagation neural network was used in the proposed CAD and the result was compared with the linear classifier. The training samples for Back-Propagation neural network and only those samples within a distance to the cluster center would be used for training. The performance of back-propagation neural network is better than that of linear classifiers.

#### VI. Evaluation:

The ultrasound CAD system is evaluated fairly and correctly, based on the classifiers chosen. Thus the masses are classified into benign and malignant. The performance of the CAD system is evaluated.

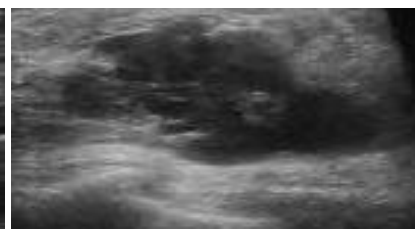


Fig. 3: Malignant mass.

#### Conclusions:

Breast ultrasound is a cancer detection method which is non-invasive, non-radiating, passive, fast, painless, low cost, risk free. Methods. We detected the masses of the sample breast ultrasound images and classified into benign or malignant. In future microcalcification will be detected and classified into benign or malignant using ultrasound images.

#### REFERENCES

Afsaneh Jalalian, B.T. Syamsiah Mashohor, Hajjah Rozi mahmud, M. Iqbal, B. Saripan, Abdul rahman B. Ramli, Babak Karasfi, 2013. Computer-

aided detection /diagnosis of breast cancer in mammography and ultrasound. Clinical imaging, 37: 420-426.

Li, Xu., Xia Xiao, Takamaro Kikkawa, 2013. Ultra-wide band microwave image reconstruction for early breast cancer detection by norm constrained capon beam forming, mathematical and computer modeling, 58: 403-408.

Paul Hamberg, M.E.M. Monique Bos, J.J. Hans Braun, M.L. Jacqueline Southward, 2010. Randomized Phase II study Comparing Efficiency and Safety of Combination.

Shafimirza, Dr.j.Apparao, 2012. Retrieval of digital images using texture feature with advanced genetic algorithm, volume31, issue4-2012.

Shahzad, A., M.O'Halloran, M. Glavin, 2013. Prefiltered Beamforming for Early-Stage Breast Cancer Detection. vol 12.

Sudeshna gangopadhyay, Argha Nandy, Pooja Hor, Ashis Mukhopadhyay, 2013. Breast Cancer

Stem Cells: A Novel Therapeutic Target, Clinical Breast Cancer, 13(1):7-15.

Tanja Cufer, Fatima cardoso, Gustavo werutsky, Herve Bonnefoi, Etienne brain, David Cameron, 2012. The EORTC Breast cancer group: major achievements of 50 years of research and future directions.ejc supplements, pp: 27-33.